



2013

Fire Alarm Systems

Product catalogue

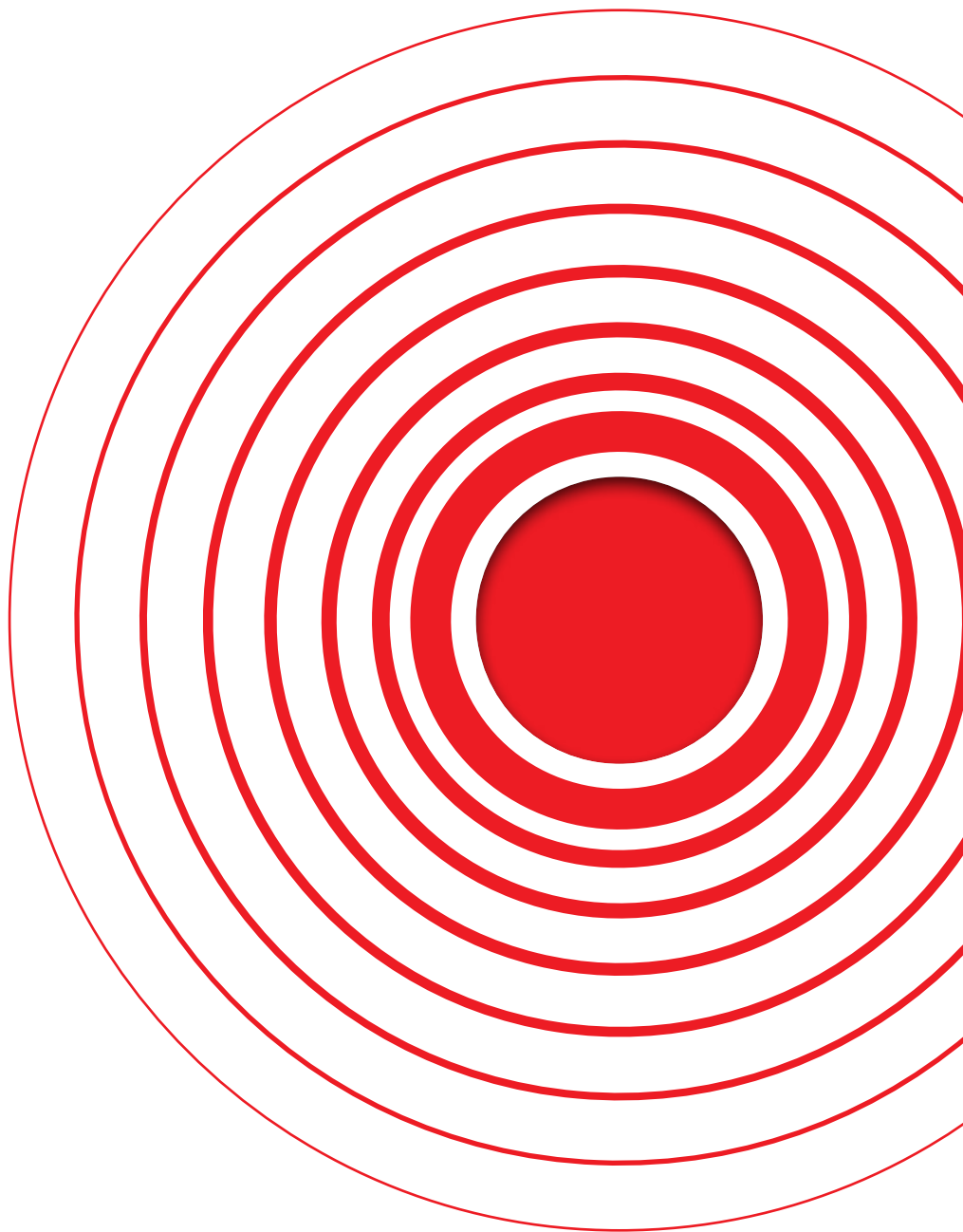


Table of contents

2013

Fire Alarm Systems

4	COMPANY PROFILE
6	ADDRESSABLE FIRE ALARM SYSTEMS
7	Addressable Fire Alarm Panels
8	SIMPO Addressable Fire Alarm Panel
9	IRIS Addressable Fire Alarm Panel
10	SensolRIS Addressable Fire Alarm Detectors: T110 S130 M140 B124
11	SensolRIS Addressable Fire Alarm Modules: MCP150 MIO MC-Z MOUT MOUT - 240
12	SensolRIS Addressable Fire Alarm Modules: MC - D MISO MINP Programmer
13	SensolRIS Addressable Fire Alarm Sirens: WSOU WSST BSOU BSST
14	CONVENTIONAL FIRE ALARM SYSTEMS
15	MAG Series Conventional Fire Alarm Panels
16	MAG Series Conventional Fire Alarm Panels: MAG2 MAG4
17	MAG Series Conventional Fire Alarm Panels: MAG8 MAG8Plus ME4 MS4 MR8 ML
18	SensoMAG Series Conventional Fire Alarm Detectors: F10 R20 S30 M40
19	SensoMAG Series Conventional Fire Alarm Detectors: MCP 150 B24 B24D B24RD B12
20	Conventional Fire Alarm Sirens: SF100 SF105 SF110 SF200 SF300
21	Accessories: FRL-1 DB Plastic Cover Set FLM Kit PS210 SL2000
22	ProsTE Programming Software
22	Observer Monitoring Software

TELETEK ELECTRONICS JSC IS A HIGH-TECH MANUFACTURER OF A FULL RANGE OF INTRUDER AND FIRE ALARM SYSTEMS

Teletek Electronics is a Subsidiary of Teletek Group Holding, Bulgaria.

Today, 22 years after the establishment of Teletek Electronics JSC, we continue to create, research and realize new ideas for better intruder and fire security products.

In order to meet our clients' contemporary and growing needs, we started researching and introducing not just separate products, but complete security and fire alarm system solutions, suitable for large range of applications - residential homes and small offices, houses, country houses, medium to large trade and office buildings (including storehouses, supermarkets, etc).

On the basis of the reliable client feedback we continue improving the quality and features of our product range. We believe in addressing our customers' needs no matter how small or big they may be.

Teletek Electronics' efforts are dedicated to its customers. We are proud we can provide effective Customer Support by facilitating:

- Requests processed on the day they are received;
- Help desk for customer technical support;
- Training - In-house or On site.

As recognition for its high quality and reliable production Teletek Electronics is awarded with ISO 9001:2000 Certificate.

Teletek Electronics JSC has already established itself as a Company with traditions and reliable solutions in intruder and fire alarm systems - our products are already well known in more than 65 countries all over the world.



The heart of Teletek Electronics' success is its productive flexibility that is expressed not only in the wide production range but also in the ability to design and make specific and exclusive versions of the product in collaboration with the Customer. This important plus brings about obvious advantages, especially in the area of intruder and fire alarm systems where the possibility to actuate a customized product is sometimes very hard to find.

Our company works with 2 hi-tech SMD lines consisting of DEK Ela screen, PHILIPS Topaz-X Pick and Place machines and Ersa Hotflow5 oven. With capability of placing over 30 000 components per hour, The Pick and Place machines enable our high skilled and motivated engineers to mount fine pitch components, BGA components and micro BGA components as well as Doublesided Reflow Soldering.

As of today, over 120 young and highly educated specialists work in the company's 6 departments to ensure a full business cycle – from market research and generation of product ideas to the development, production and marketing of the end product.

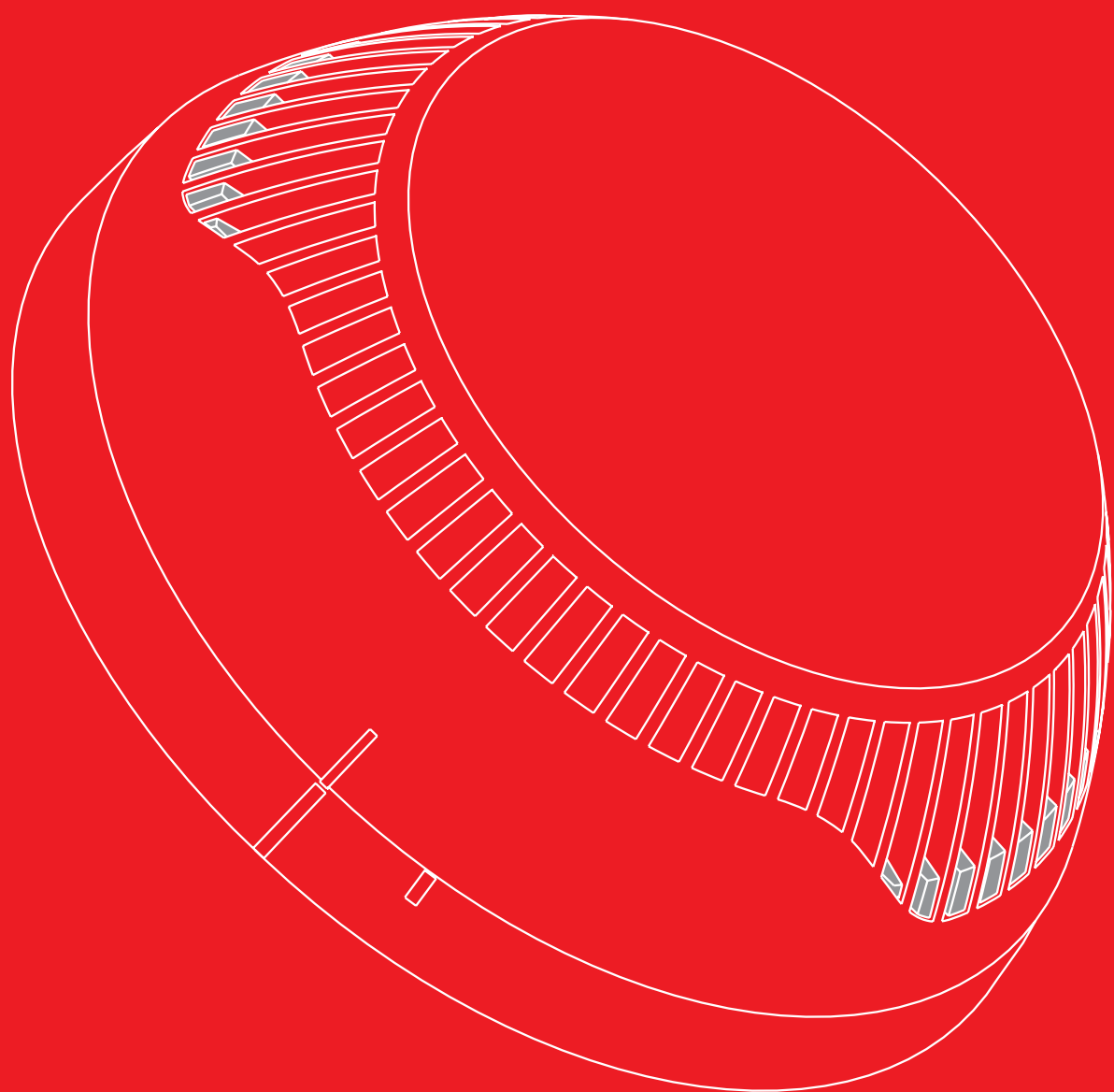
The Marketing and Sales together with Product Management and Technical support teams are the link between the company and its valued customers. As a customer – oriented company Teletek Electronics strives to maintain a constant bond with its Clients by trying to respond to their technical and market needs. We have gained valuable experience in making custom made solutions for our top Clients to their specifications and individual preferences.

Thousands of installations have been carried out with Teletek's intruder and fire alarm ranges in over 65 countries in the last 22 years. This gives us the confidence that there is no obstacle we cannot overcome together with our Partners.

We do believe that our Partners are not just our Customers but also friends. We are successful because of them and we will continue to work successfully together because Teletek Electronics is the security system manufacturer you can rely on!



ADDRESSABLE FIRE ALARM SYSTEMS



IRIS / SIMPO

ADDRESSABLE PANELS



EVPU[®]



IRIS

SIMPO

Loops	1 - 4	1 - 2
Devices per Loop	250	250
Expansion Loops	IRIS TTE/IRIS SS	Simpo TTE
Galvanic Separation in Loops	Yes	No
Built in isolator in Loops	Yes	Yes
Total number of devices per system	1000	500
Zones	96	16
Multi language display	Yes	Yes
Multi language front panel	No	Yes
Redundant processor	Yes	No
Event Log	10 000	10 000
Day/Night Mode	Yes	Yes
System Sensor Protocol	Yes	No
Sounders/Strobes Synchronization	Yes	Yes
Display	320/240 touch screen	4*40 symbols LCD
TCP/IP	Yes (built in)	Yes (optional)
Redundant network (RS 485)	Yes (optional)	Yes (optional)
Battery	1*12/18Ah	1*12/18Ah
Box	Metal with plastic cover	Metal
Software Support	ProsTE/Observer	ProsTE/Observer
Standard	EN54 - 2/4	EN54 - 2/4

IRIS

ADDRESSABLE PANEL

- Up to 4 loops with up to 250 devices per loop
- Works with Teletek Electronics and System Sensor protocol

IRIS is an addressable fire alarm panel with 1 to 4 loops and maximum coverage of 96 zones. Up to 250 devices can be connected to every system loop. The information for the system status is visualized on sensitive graphic display and LED indication for zones and troubles. With special 2 Steps of alarm level working algorithm the false alarms are effectively minimized. The panel has a comprehensive day/night mode facility. The panel supports two communication protocols: Teletek Electronics (IRIS TTE loop) and System Sensor series 200/500 (IRIS SS loop) according to the type of devices used. In the configuration of the IRIS panel both TTE and SS Loops can be implemented at the same time. Up to 32 IRIS panels can be connected in Ethernet network or RS485 redundant network. Direct programming with ProsTE software is available.

Loops:	1 to 4 (both TTE and SS loops can be mounted in random configuration)
Devices per loop	250 (TTE loop); 198 (SS loop)
Zones:	96
Outputs (monitored, relay):	4
Outputs (non-monitored, programmable, relay):	4, 230V/10A
Programmable inputs/outputs:	up to 128
Memory LOG.:	10 000 events
Panels in Ethernet network (built in TCP/IP):	Up to 32
Panels in RS485 redundant network (optional module)	Up to 32
Thermal printer:	Optional
Display	320/240 touch screen
Multi language support:	Yes (English, Italian, Portuguese, Russian, Turkish, Polish, Croatian, Bulgarian currently available)
Programming:	ProsTE software
Standard:	EN54 - 2/4

EN54 - 2/4



Technical Specifications

Main Power Supply	~230 ± 10%
Frequency	50/ 60Hz
Back-up Power Supply.....	1 battery, 12V/ 18Ah
Electrical output	1A
Operating temperature	-10°C to +50°C
Weight (without battery)	6kg
Dimensions of metal bottom	441x331x80mm
Dimensions of front cover.....	461x344x45mm

IRIS TTE Loop

- Loop Expander for 1 loop
- TTE protocol
- Supports SensolIRIS devices
- Maximum consumption of loop devices - 500mA
- Maximum number of devices in the loop - 250



IRIS SS Loop

- Loop Expander for 1 loop
- System Sensor 200/500 and advanced 200 protocols
- Supports System Sensor devices
- Maximum consumption of loop devices - 500mA
- Maximum number of devices in the loop - 198 (99 detectors + 99 devices)



SIMPO

ADDRESSABLE PANEL

- Up to 2 loops with up to 250 devices per loop
- Entry level solution for smaller addressable installations

Simpo is the perfect solution for smaller addressable installations. It is an up to two loop panel with coverage of 16 zones. 250 devices with Teletek Electronics protocol could be connected to each loop. System status is visualized via LCD display and LED indication. Up to 32 Simpo panels can be connected in RS485 redundant network or Ethernet network. Direct programming with ProsTE software is available. The panel comes in a metal casing with a multilingual LCD display and front foil for easier customization.

Loops:	Up to 2 (TTE protocol)
Devices per loop	250
Zones:	16
Inputs:	3
Outputs (monitored, relay):	7
Outputs (monitored, programmable, relay):	4, 230V/10A
Memory LOG.:	10 000 events
Panels in Ethernet network (optional TCP/IP):	Up to 32
Panels in RS485 redundant network (optional module)	Up to 32
Thermal printer:	Optional
Display	4*40 symbols
Multi language support:	Yes (English, Portuguese, Bulgarian currently available)
Programming:	ProsTE software
Standard	EN54 - 2/4

EN54 - 2/4



Technical Specifications

Main Power Supply	90 ÷ 264 VAC
Frequency	47 ÷ 440 Hz
Back-up Power Supply	1 battery, 12V/ 18Ah
Electrical output	4,7A
Operating temperature	-10°C to +50°C
Weight (without battery)	4,2kg
Dimensions	308x415x78mm

SIMPO TTE Loop



- Loop Expander for 1 loop
- TTE protocol
- Supports SensorIRIS devices
- Maximum consumption of loop devices - 500mA
- Maximum number of devices in the loop - 250

SENSOIRIS

ADDRESSABLE DETECTORS



SensolRIS T110/ IS

EN54 - 5

- Fixed Temperature and Rate of Rise detector
- Supports Teletek Electronics protocol
- Class, selectable from the control panel - A1R, A2S, BS
- Protected area (in accordance with EN54-5) - up 35m²
- Installation height (in accordance with EN54-5) - up 3.5m
- Day/Night mode
- Low profile design
- LED indication with 360 visibility
- Available with built in isolator - SensolRIS T110 IS



SensolRIS S130/ IS

EN54 - 7

- Optical smoke detector
- Supports Teletek Electronics protocol
- Sensitivity, selectable from control panel - High/ Normal/ Middle/ Low
- Protected area (in accordance with EN54-7) - up 120m²
- Installation height (in accordance with EN54-7). - up 16m
- Day/Night mode
- Low profile design
- LED indication with 360 visibility
- Available with built in isolator - SensolRIS S130 IS



SensolRIS M140/ IS

EN54 - 5/7

- Combined detector
- Supports Teletek Electronics protocol
- Class (in accordance with EN54-5) - A1R
- Sensitivity (in accordance with EN54-7) - High/ Normal/ Middle/ Low
- Protected area (in accordance with EN54-5,7) - up 120m²
- Installation height (in accordance with EN54-5,7) - up 16m
- Day/Night mode
- Low profile design
- LED indication with 360 visibility
- Available with built in isolator - SensolRIS T110 IS



SensolRIS B124

- Compatible with SensolRIS detectors
- Wire gauge for terminals - 3mm
- Material (plastic), color - ABS, white

SENSOLIRIS

ADDRESSABLE MODULES



SensolIRIS MCP 150

EN54 - 11

- Manual call - point
- Supports Teletek Electronics protocol
- Type of the working element - resettable (flexible)
- Type, according EN54-11 - A
- Built in isolator
- Material (plastic), color - ABS, red
- Optional protective plastic cover



SensolIRIS MIO

EN54 - 18

- Input/output modules
- Supports Teletek Electronics protocol
- Placed in plastic box with transparent cover for easy inspection
- Built in isolator
- Loop powered
- Available versions - MIO 22 (2 inputs/2 outputs); MIO 04 (4 outputs); MIO 40 (4 inputs)



SensolIRIS MC-Z

EN54 - 18

- Conventional zone module
- Supports Teletek Electronics protocol
- Provides interface between a zone of conventional detectors and an addressable IRIS TTE loop expander
- Placed in plastic box with transparent cover for easy inspection
- Built in isolator
- Loop powered



SensolIRIS MOUT

EN54 - 18

- Potential output for conventional sounders
- Supports Teletek Electronics protocol
- Provides interface between a zone of conventional sirens and an addressable IRIS TTE loop expander
- Placed in plastic box with transparent cover for easy inspection
- Built in isolator



SensolIRIS MOUT - 240

EN54 - 18

- Relay output module
- Supports Teletek Electronics protocol
- Suitable for control of 240V AC voltage circuits
- Placed in plastic box with transparent cover for easy inspection
- Built in isolator
- Loop powered

SENSOIRIS

ADDRESSABLE MODULES



SensolRIS MC - D

EN54 - 18

- Addressable base for conventional SensoMAG series detectors
- Allows the use of conventional detectors with Teletek Electronics addressable panels IRIS and SImpo
- Supports Teletek Electronics protocol
- Loop powered



SensolRIS MISO

EN54 - 17

- Isolator module
- Placed in plastic box with cable running holes for easy installation
- Supports Teletek Electronics protocol



SensolRIS MINP

EN54 - 17

- Mini input module
- Used for connection of external control devices, gas detection, panic switches, etc
- Compact size for built in mounting
- Supports Teletek Electronics protocol



SensolRIS Programmer

- Programming tool
- Compatible with SensolRIS detectors and modules
- TTE protocol
- Mobility in operation
- Optional battery power supply 4x1.5V (not included)
- The kit includes: cables for programming SensolRIS modules; AC-DC adapter

SENSOIRIS

ADDRESSABLE SIRENS/STROBES



SensolRIS WSOU / IS

EN54 - 3

- Wall mount sounder
- Sound level - 92dB/100dB
- 32 sound types selectable from the panel
- TTE protocol
- Loop synchronization for better alarm signal
- Loop powered
- Color - red
- Version with built in isolator (SensolRIS WSOU IS)



SensolRIS WSST / IS

EN54 - 3/23

- Wall mount sounder and strobe
- Sound level - 92dB/100dB
- 32 sound types selectable from the panel
- TTE protocol
- Loop synchronization for better alarm signal
- Loop powered
- Color - red, transparent
- Version with built in isolator (SensolRIS WSST IS)



SensolRIS BSOU / IS

EN54 - 3

- Base with built in sounder
- Sound level - 92dB/100dB
- 32 sound types selectable from the panel
- TTE protocol
- Loop synchronization for better alarm signal
- Loop powered
- Color - white
- Version with built in isolator (SensolRIS BSOU IS)

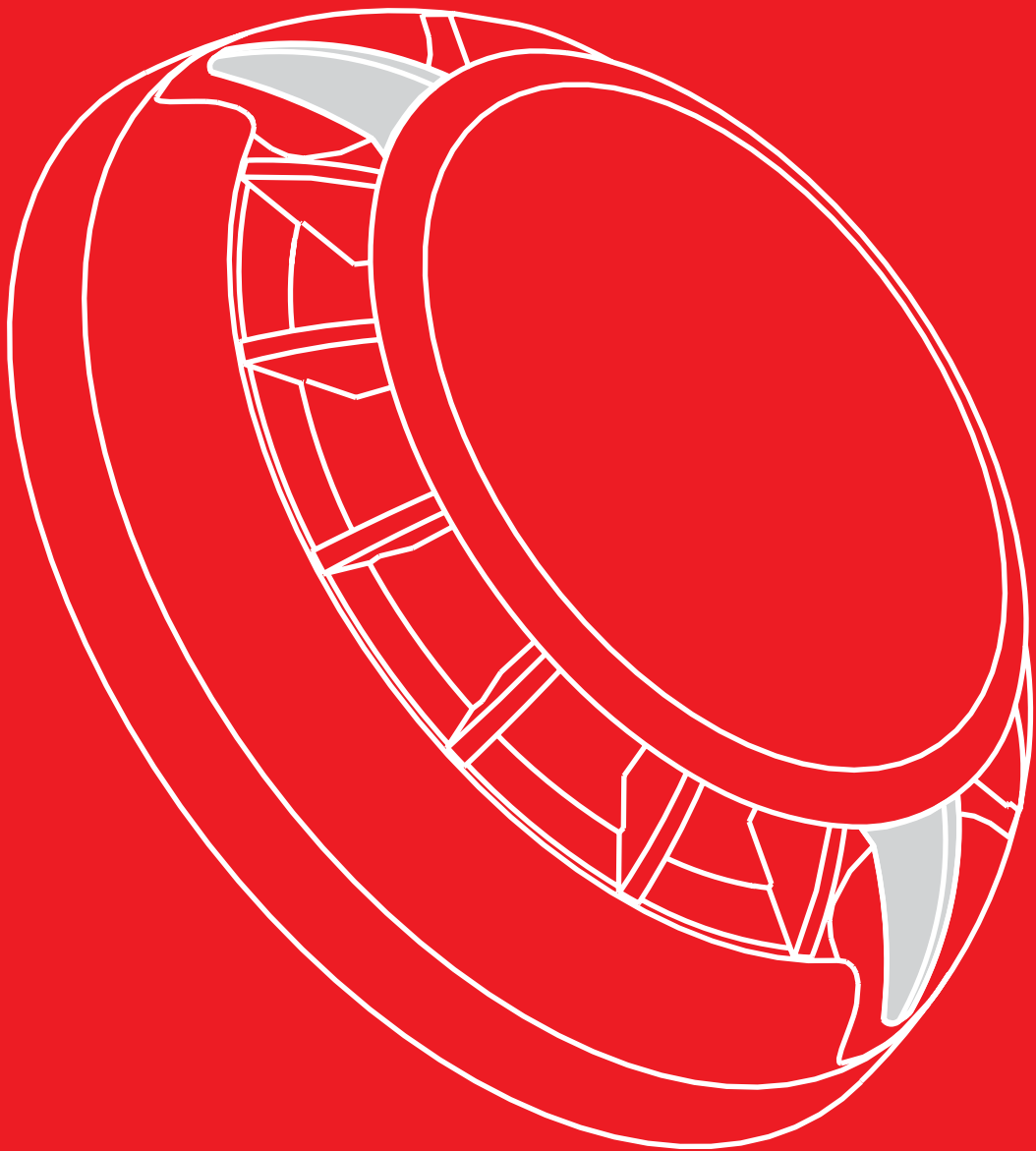


SensolRIS BSST / IS

EN54 - 3

- Base with built in sounder and strobe
- Sound level - 92dB/100dB
- 32 sound types selectable from the panel
- TTE protocol
- Loop synchronization for better alarm signal
- Loop powered
- Color - white
- Version with built in isolator (SensolRIS BSST IS)

CONVENTIONAL FIRE ALARM SYSTEMS



MAG

CONVENTIONAL PANELS

EVPU[®]



MAG2

MAG4

MAG8

MAG8plus

Zones	2	4	8	8-16
Detectors	32 per zone	32 per zone	32 per zone	32 per zone
Double knock	No	No	Yes	Yes
Call points	Unlimited	Unlimited	Unlimited	Unlimited
Sounder output	2 (0,3 mA)	2 (0,3 mA)	2 (0,5 mA)	4 (0,3 mA)
Fire relay	Yes	Yes	Yes	Yes
Fault relay	Yes	Yes	Yes	Yes
AUX output	Yes (0,3 mA)	Yes (0,3 mA)	Yes (0,3 mA)	Yes (0,3 mA)
Sounder delays	No	No	Yes	Yes
Instant zone	No	No	Yes	Yes
Indication	LED	LED	LED	LED
Access protection	Key	Key	Key	Key
Plastic box/Metal box	Yes/Yes	Yes/Yes	Yes/No	Yes/No
Zone expander	No	No	No	Yes
Sounder expander	No	No	No	Yes
LOG module	No	No	Yes	Yes
Relay expander	No	No	Yes	Yes
Battery	1*12/7Ah	1*12/7Ah	1*12/7Ah	1*12/7Ah
Standard	EN54 - 2/4	EN54 - 2/4	EN54 - 2/4	EN54 - 2/4

MAG

CONVENTIONAL PANELS



MAG 2

EN54 - 2/4

- Conventional fire alarm control panel
- 2 fixed zones
- Supports up to 64 detectors and unlimited call-points
- 2 monitored siren outputs - 300 mA each
- Active EOL allowing continuous monitoring of inputs
- Levels of access protected by means of key
- No programming
- Multi language front panels
- Metal or plastic box

Main Power Supply	~230 ± 10%
Back-up Power Supply.....	1 battery, 12V/ 7Ah
Main power supply consumption.....	50mA
Auxiliary output.....	24VDC/ 0.3A fuse
Operating temperature	0°C to +40°C
Weight (without battery)	~2.7kg (m); ~2.1kg (p)
Dimensions of the metal box	200x290x80mm
Dimensions of the plastic box.....	340x290x100mm



MAG 4

EN54 - 2/4

- Conventional fire alarm control panel
- 4 fixed zones
- Supports up to 128 detectors and unlimited call-points
- 2 monitored siren outputs - 300 mA each
- Active EOL allowing continuous monitoring of inputs
- Levels of access protected by means of key
- No programming
- Multi language front panels
- Metal or plastic box

Main Power Supply	~230 ± 10%
Back-up Power Supply.....	1 battery, 12V/ 7Ah
Main power supply consumption.....	50mA
Auxiliary output.....	24VDC/ 0.3A fuse
Operating temperature	0°C to +40°C
Weight (without battery)	~3.5kg (m); ~2.1kg (p)
Dimensions of the metal box.....	320x220x80mm
Dimensions of the plastic box.....	340x290x100mm



MAG 8

EN54 - 2/4

- Conventional fire alarm control panel
- 8 fixed zones
- Supports up to 256 detectors and unlimited call-points
- 2 monitored siren outputs - 400 mA each
- Double knock mode
- Siren delay
- Supports relay expander and LOG module
- Active EOL allowing continuous monitoring of inputs
- Levels of access protected by means of key
- Simple programming by means of jumpers
- Multi language front panels
- Plastic box

Main Power Supply~230 ± 10%
 Back-up Power Supply.....1 battery, 12V/ 7Ah
 Main power supply consumption 125 mA
 Auxiliary output24VDC/ 0.3A fuse
 Operating temperature0°C to +40°C
 Weight (without battery)~2.4kg
 Dimensions of the plastic box.....340x290x100mm



MAG 8 Plus

EN54 - 2/4

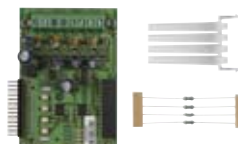
- Conventional fire alarm control panel
- 8 to 16 zones, expandable
- Supports up to 512 detectors and unlimited call-points
- 4 monitored siren outputs - 300 mA each
- Double knock mode
- Siren delay
- Supports relay expander and LOG module
- Active EOL allowing continuous monitoring of inputs
- Levels of access protected by means of key
- Simple programming by means of jumpers
- Multi language front panels
- Plastic box

Main Power Supply~230 ± 10%
 Back-up Power Supply.....1 battery, 12V/18Ah
 Main power supply consumption50mA
 Auxiliary output24VDC/ 0.3A fuse
 Operating temperature-5°C to +40°C
 Weight (without battery)~4kg
 Dimensions of metal bottom441x331x80mm
 Dimensions of plastic cover.....461x344x45mm



ML

- LOG module for recording and viewing of events
- Compatible with MAG8 and MAG8Plus
- Memory for 510 events
- Operation keypad with 4 buttons
- LCD display with backlight
- Multilingual menus



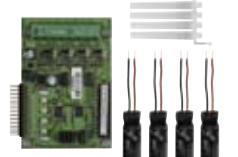
MS 4

- 4 siren outputs expander module
- Compatible with MAG8Plus



MR 8

- 8 relay expander module
- Compatible with MAG8 and MAG8Plus
- 1A/12 V



ME 4

- 4 zone expander module
- Compatible with MAG8Plus

SENSOMAG

CONVENTIONAL DETECTORS



SensomAG F10

EN54 - 5

- Fixed heat detector
- Detects temperatures over 60 °C, class A2S (SensomAG F10A)
- Detects temperatures over 75 °C, class BS (SensomAG F10B)
- Digital processing algorithm
- Protected area - up to 35 sq. m.
- Low profile design
- LED indication with 360 visibility
- Sensor status indication on every 8 seconds



SensomAG R20

EN54 - 5

- Rate-of-rise heat detector
- Detects temperatures above 58 °C or rapid change in temperature for a period of time, class A1R
- Digital processing algorithm
- Protected area - up to 35 sq. m.
- Low profile design
- LED indication with 360 visibility
- Sensor status indication on every 8 seconds



SensomAG S30

EN54 - 7

- Optical-smoke detector
- Auto compensation
- Digital processing algorithm
- Protected area - up to 120 sq. m.
- Low profile design
- LED indication with 360 visibility
- Sensor status indication on every 8 seconds



SensomAG M40

EN54 - 5/7

- Multi criteria (Optical-smoke and Heat) detector
- Auto compensation
- Digital processing algorithm
- Protected area - up to 120 sq. m.
- Low profile design
- LED indication with 360 visibility
- Sensor status indication on every 8 seconds



Gasket ring

- Rubber gasket ring
- Provides additional protection of the smoke chamber against dust and dirt
- Compatible with conventional detectors SensomAG S30 and SensomAG M40
- Easy mounting

SENSOMAG

CONVENTIONAL DETECTORS



SensoMAG MCP 150

EN54 - 2/4

- Manual call point
- Surface mounting
- Resettable flexible element
- LED indication
- Special test tool for resetting after alarm event
- Optional protective plastic cover



SensoMAG B24

- Standard 24V base for SensoMAG detectors
- Compatible with fire panels alarm state current up to 15 mA



SensoMAG B24D

- Standard 24V base with Schottky diode for SensoMAG detectors
- Detects removal of detector from base
- Compatible with fire panels with alarm state current up to 15 mA



SensoMAG B24RD

- Standard 24V base with Schottky diode and increased alarm state current for SensoMAG detectors
- Detects removal of detector from base
- Compatible with fire panels with alarm state current up to 45 mA
- 24V

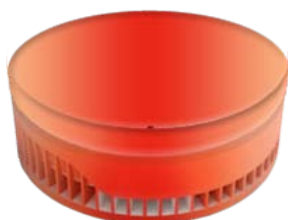


SensoMAG B12

- Relay 12V base
- For application in intruder alarm system
- Latched/Unlatched mode

SIRENS

CONVENTIONAL



SF 100

EN54 - 3

- Indoor fire alarm siren and strobe
- Piezo sounder
- LED strobe
- Sound output - 100 dB
- Low profile
- Current - 10 mA
- Two wire connection



SF 105

EN54 - 3

- Indoor fire alarm siren
- Piezo sounder
- Sound output - 105 dB
- LED strobe
- Plastic case
- Power supply - 24 V
- Two wire connection
- Current - 80 mA



SF 110

EN54 - 3

- Indoor fire alarm siren
- Piezo sounder
- Sound output - 100 dB
- Power supply - 24 V
- Plastic case
- Current - 100 mA



SF 200

EN54 - 3

- Outdoor fire alarm siren
- LED strobe
- 1 status indicator
- Sound output - 96 dB
- Plastic case
- IP54 protection for electronics
- Current - 90 mA



SF 300

EN54 - 3

- Outdoor fire alarm siren
- LED strobe
- Sound output - 95 dB
- Plastic case
- IP54 protection for electronics
- Current - 90 mA

ACCESSORIES

FIRE ALARM SYSTEMS



FRL - 1

EN54 - 23

- Remote 24V fire indicator
- Repeats the status of 1 or several fire detectors (up to 3 SemsoMAG detectors)
- 1 input



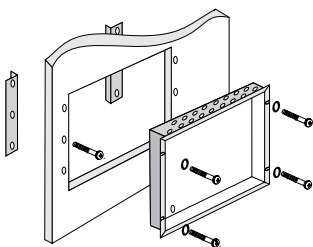
Deep Base

- Deep base accessory
- Application for mounting on rough surfaces, pipelines, floating ceilings, etc
- Compatible with SensoMAG and SensoIRIS



Call-point plastic cover set

- Set of 5 pcs. protective plastic cover for manual call-points
- Compatible with SensoMAG MCP 50 and SensoIRIS MCP 150



FLM Kit

- Kit for flush mounting
- For use on 25 mm thick dry wall
- Includes: 2 hangers, 1 metal bottom, mounting screws
- Compatible with IRIS and MAG8plus



PS2410

EN54 - 3

- Power supply unit
- 24 V DC/1A
- Metal box
- Transformer



Fire Ray 50R/ 100R

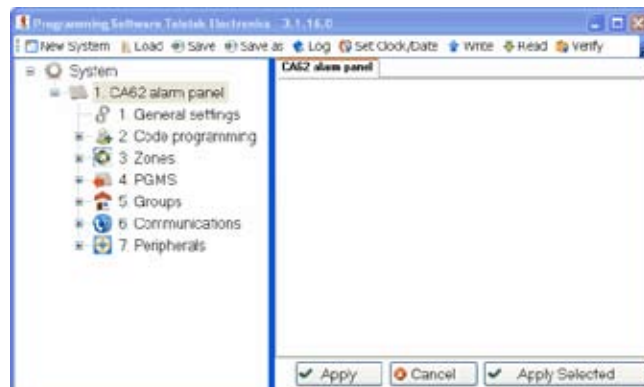
EN54 - 12

- Reflective infrared beam detector
- 12 - 24 Vdc
- Low current consumption
- Model 50R (5-50m)
- Model 100R (50 - 100m)

ProTE

PROGRAMMING SOFTWARE

ProTE is a software package for programming of Teletek Electronics intruder and fire alarm panels. The software allows fast and user-friendly programming to the benefit of installers.



Supported products

- Eclipse 8
- Eclipse 32
- Eclipse 99
- CA62
- VEGA6
- IRIS
- SIMPO
- ARGUS
- AJAX LAN
- AJAX GPRS/GSM
- AJAX GPRS/GSM Simple
- TP2000 (ver. 8.xx)

ProsTE Advantages

- Intuitive and user friendly graphic interface
- Easy programming of all system parameters
- Saves time and effort
- Allows creation of default configurations in tdf (teletek data files) ready for use on site
- Decreases possibility for mistakes during programming
- No need to remember addresses or use programming manuals
- Completely free download and automatic update available at teletek-electronics.com
- Multi language support
- Help wizard

OBSERVER

MONITORING SOFTWARE

Observer is a software application for monitoring of sites equipped with Teletek Electronics addressable fire alarm systems.

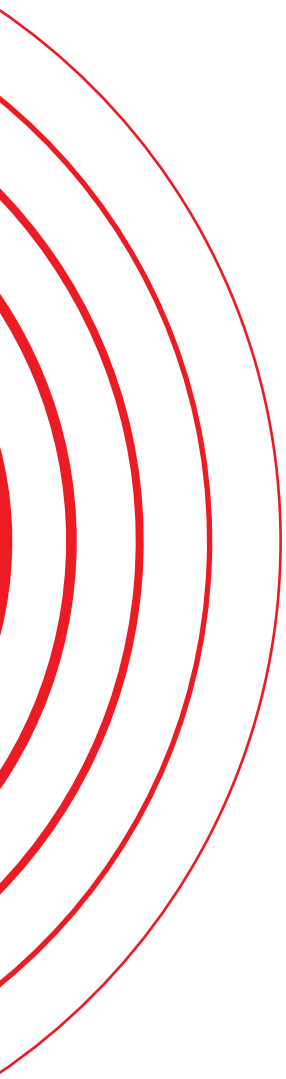


Functional Specifications

- In accordance with the technical and functional specifications of Teletek Electronics addressable fire alarm panels
- Supports up to 32 panels with 1000 devices per panel
- Monitors the condition and state of detectors - Alarm, Normal, Fault
- Shows full information about the detector in alarm state - zone, name, etc
- Monitors faults in the panel - Low Batt, AC Loss, etc
- Allows control over the panel - silence buzzer, silence sirens, evacuation, reset
- Allows import of architectural plans and pictures on which the detectors are placed (JPG, BMP, PNG, TIF, GIF)
- Keeps printable event log
- Signals visually and audibly in case of alarm or fault
- ModBus protocol included

Observer Advantages

- Direct ProsTE files import (Device name, zone name, panel name and panel IP address)
- Devices Drag and drop placement
- Panels control
- Minimum programming
- Simple and User Friendly Interface
- Windows XP and Windows 7 support
- Multi language support
- Protection by means of password and hardware key (Dongle)
- Event audio signalization





[www.
teletek-electronics
.com](http://www.teletek-electronics.com)

a: "Srebarna" 14A Str, Sofia - 1407, BULGARIA
t: (+359 2) 9694 800
f: (+359 2) 962 52 13
e: info@teletek-electronics.bg